

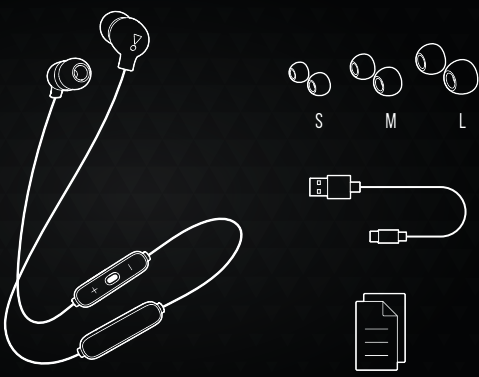
QUICK START GUIDE



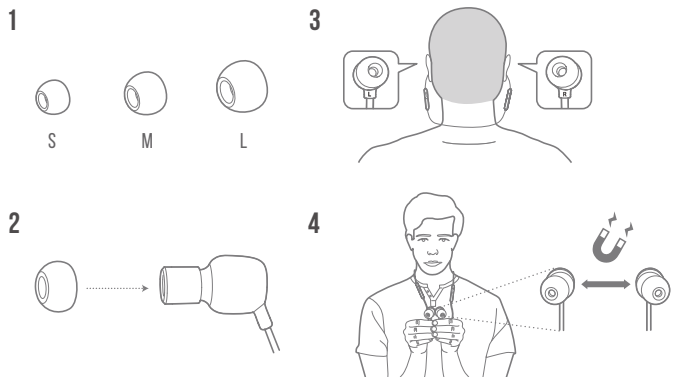
TUNE125 BT



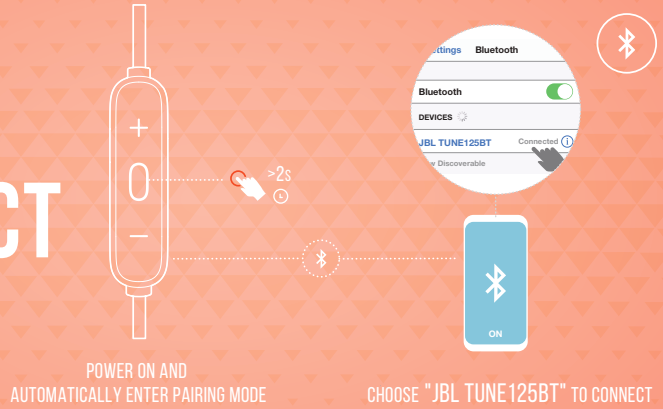
WHAT'S IN THE BOX



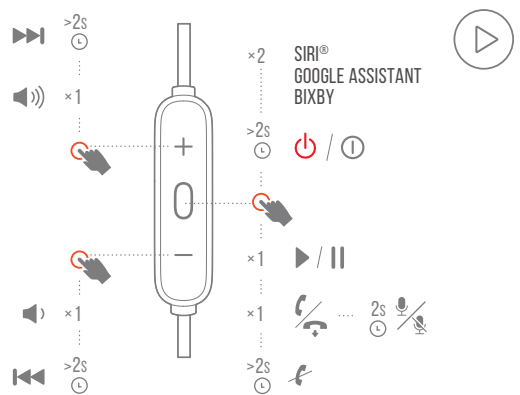
HOW TO WEAR



POWER ON & CONNECT



BUTTON COMMAND

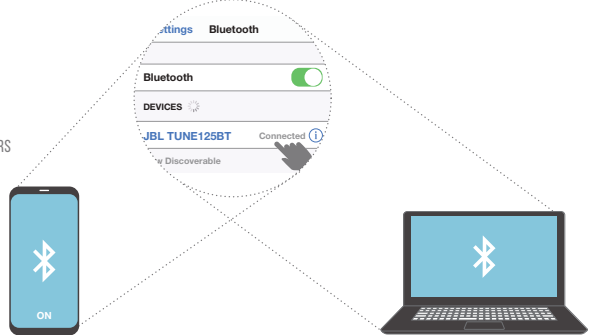


MULTI-POINT CONNECTION

* (MAXIMUM 2 DEVICES)

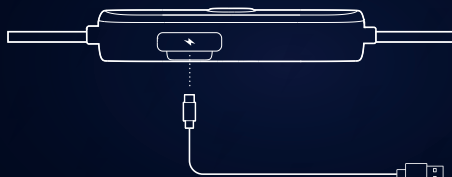
ENTER PAIRING MODE WITH THE 2ND DEVICE

- TO SWITCH MUSIC SOURCE, PAUSE THE MUSIC ON THE CURRENT DEVICE AND SELECT PLAY ON THE 2ND DEVICE.
- PHONE CALL WILL ALWAYS TAKE PRIORITY.
- IF ONE DEVICE GOES OUT OF BLUETOOTH RANGE OR POWERS OFF, YOU MAY NEED TO MANUALLY RECONNECT THE REMAINING DEVICE.
- SELECT "FORGET THIS DEVICE" ON YOUR BLUETOOTH DEVICES TO DISCONNECT MULTI-POINT.



1ST BLUETOOTH DEVICE CHOOSE "JBL TUNE125BT" TO CONNECT 2ND BLUETOOTH DEVICE

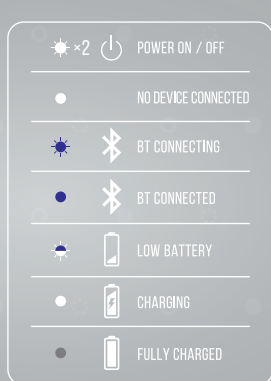
CHARGING



CHARGE + = 2HR

10MIN = 1H

LED BEHAVIORS



TECH SPEC

Model: TUNE125BT
Driver Size: 8.6 mm / 0.34" Dynamic driver
Power supply: 5V --- 1 A
Weight: 18.3 g / 0.04 lbs
Headset battery type: Lithium-ion battery (3.7V / 130 mAh)
Charging time: < 2 hrs
Music playtime with BT on: up to 16 hrs
Frequency response: 20 Hz – 20 kHz
Impedance: 16 ohm
Sensitivity: 95 dB SPL @1kHz 1mw
Microphone sensitivity: -29 dBV/Pa @1kHz
Bluetooth version: 5.0
Bluetooth profile version: HFP 1.7, A2DP 1.3, AVRCP 1.6
Bluetooth transmitter frequency range: 2.4 GHz- 2.4835 GHz
Bluetooth transmitted power: < 6 dBm
Bluetooth transmitted modulation: GFSK, π/4 DQPSK, 8DPSK
Maximum operation temperature: 45 °C



